

Floor plans

	LETTABLE AREA	PRIVATE TERRACES AND GARDENS	
Roof terrace	-	1,111 sqm	
6 th Floor	4,387 sqm	174 sqm	
5 th Floor	4,598 sqm	28 sqm	
4 th Floor	4,634 sqm	-	
3 rd Floor	4,634 sqm	-	
2 nd Floor	4,634 sqm	106 sqm	
1 st Floor	2,645 sqm	521 sqm	
Ground floor	1,572 sqm	5,416 sqm	
Basement -1	-	-	200 car parking spaces
Basement -2	-	-	189 car parking spaces
TOTAL	27,104 sqm	7,356 sqm	389 car parking spaces (+15 motorcycle parking spaces)

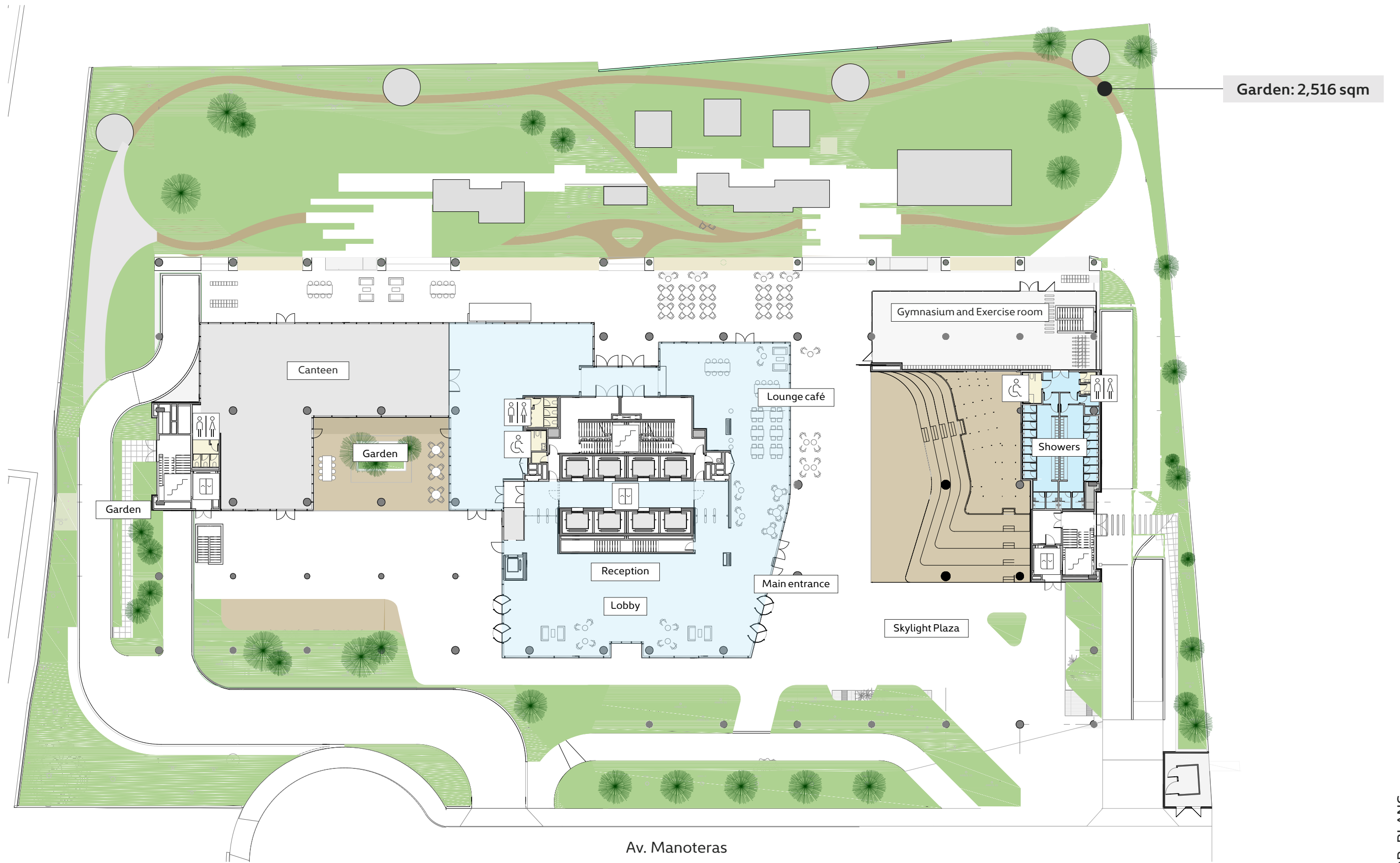
27,104 sqm
Total lettable area



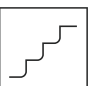
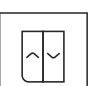
Over **10,000 sqm** of outdoor space including
7,356 sqm of private terraces and gardens

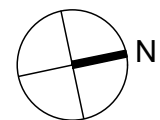
389 car parking spaces
100 electric vehicle parking spaces
(10 installed and 90 pre-installed)

Ground floor

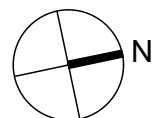
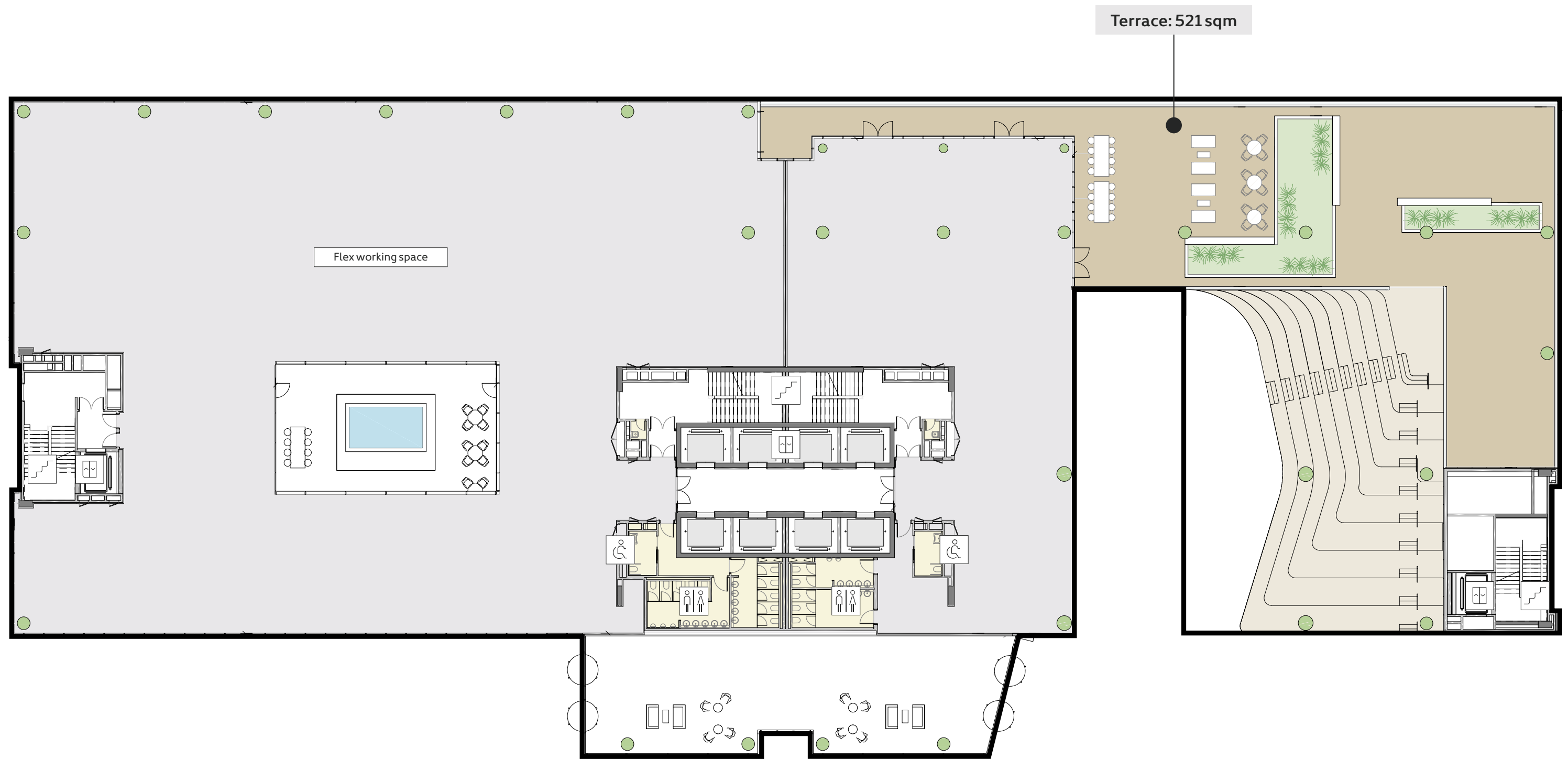
1,572 sqm



-  Accessible WC
-  WC
-  Stairs
-  Lifts



1st Floor
2,645 sqm



Accessible WC



WC



Stairs

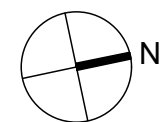
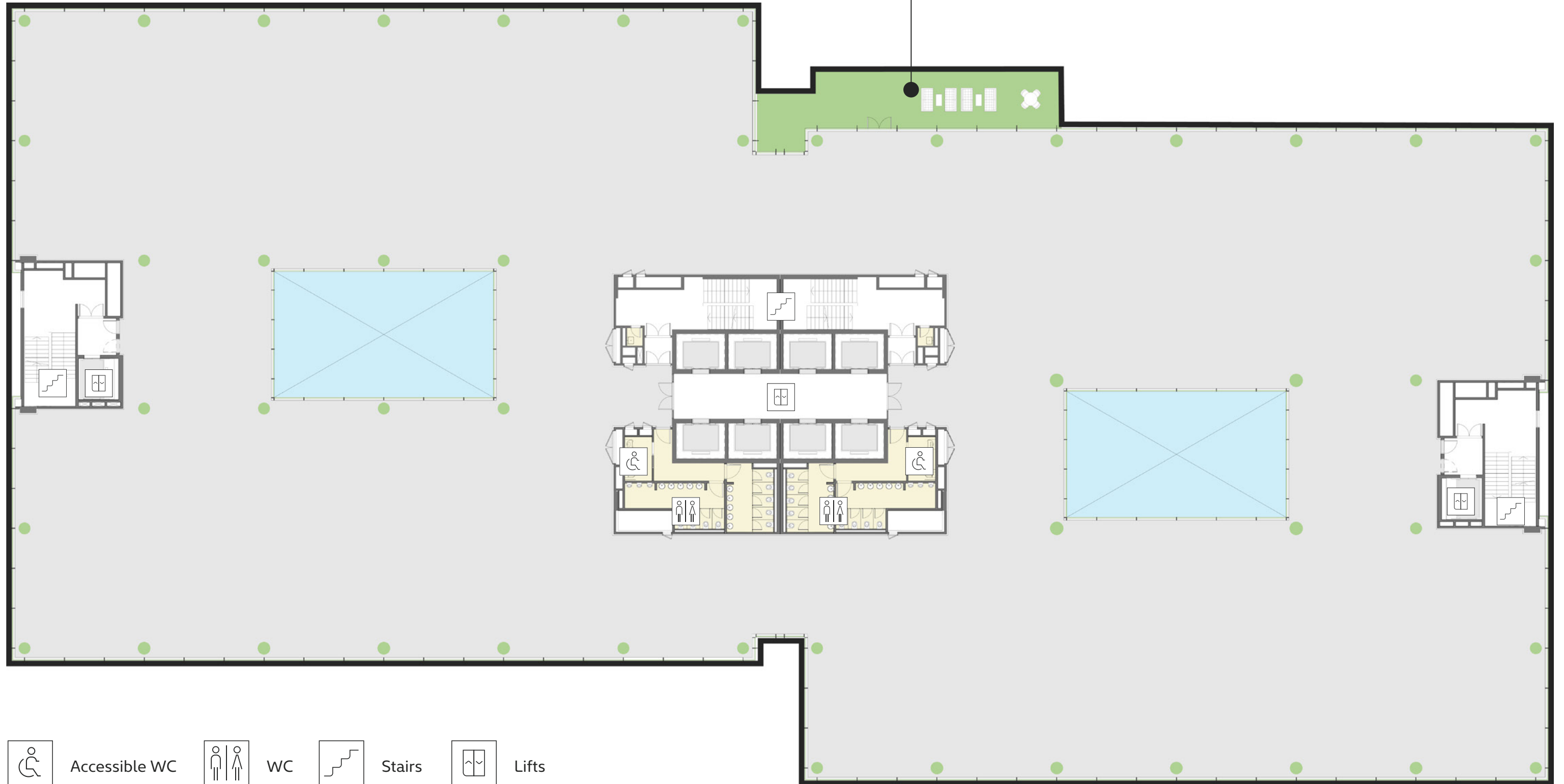


Lifts

2nd Floor

4,634 sqm

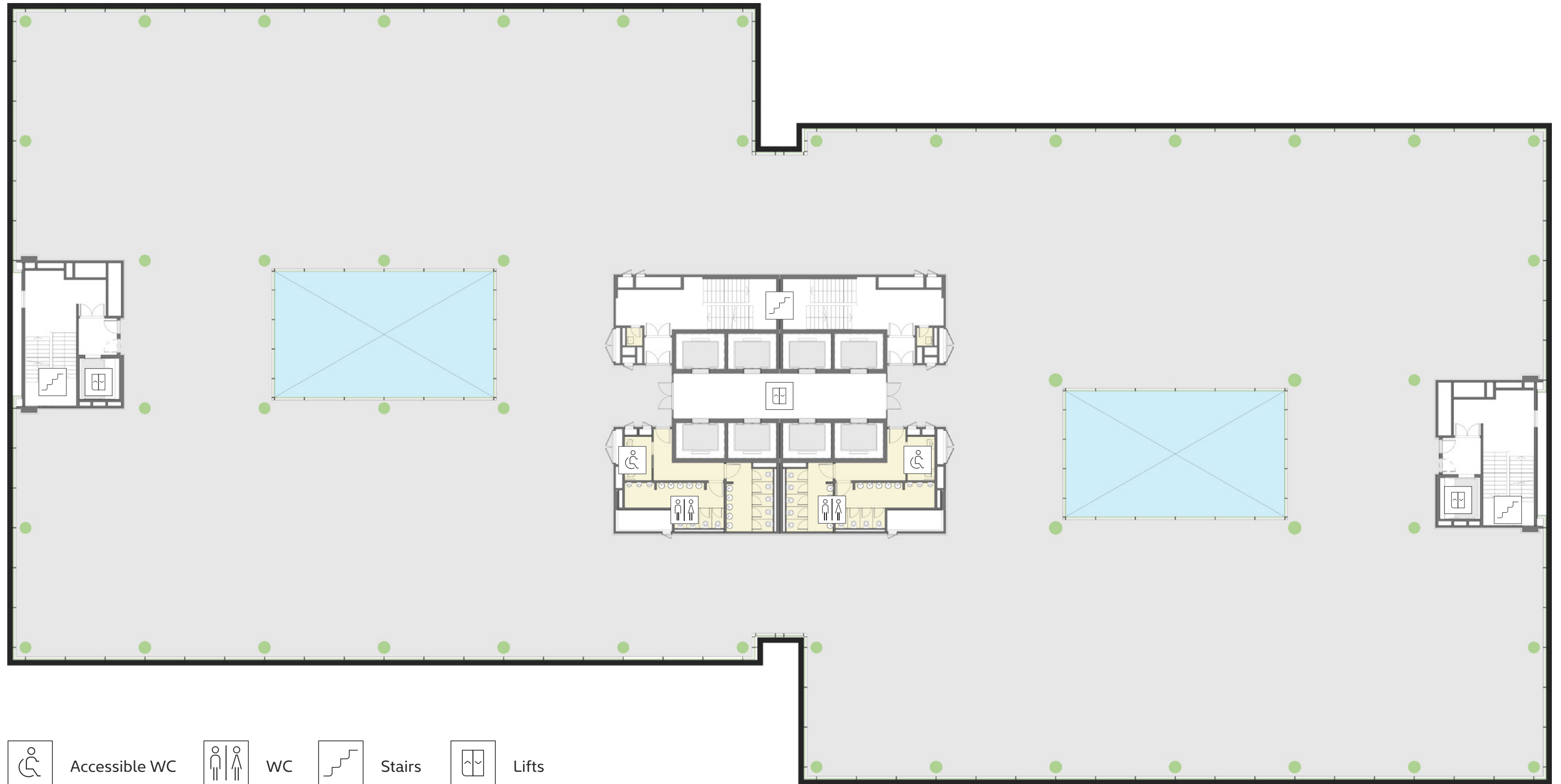
Terrace: 106 sqm



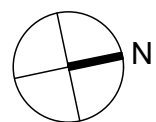
- Accessible WC
- WC
- Stairs
- Lifts

3rd Floor

4,634 sqm



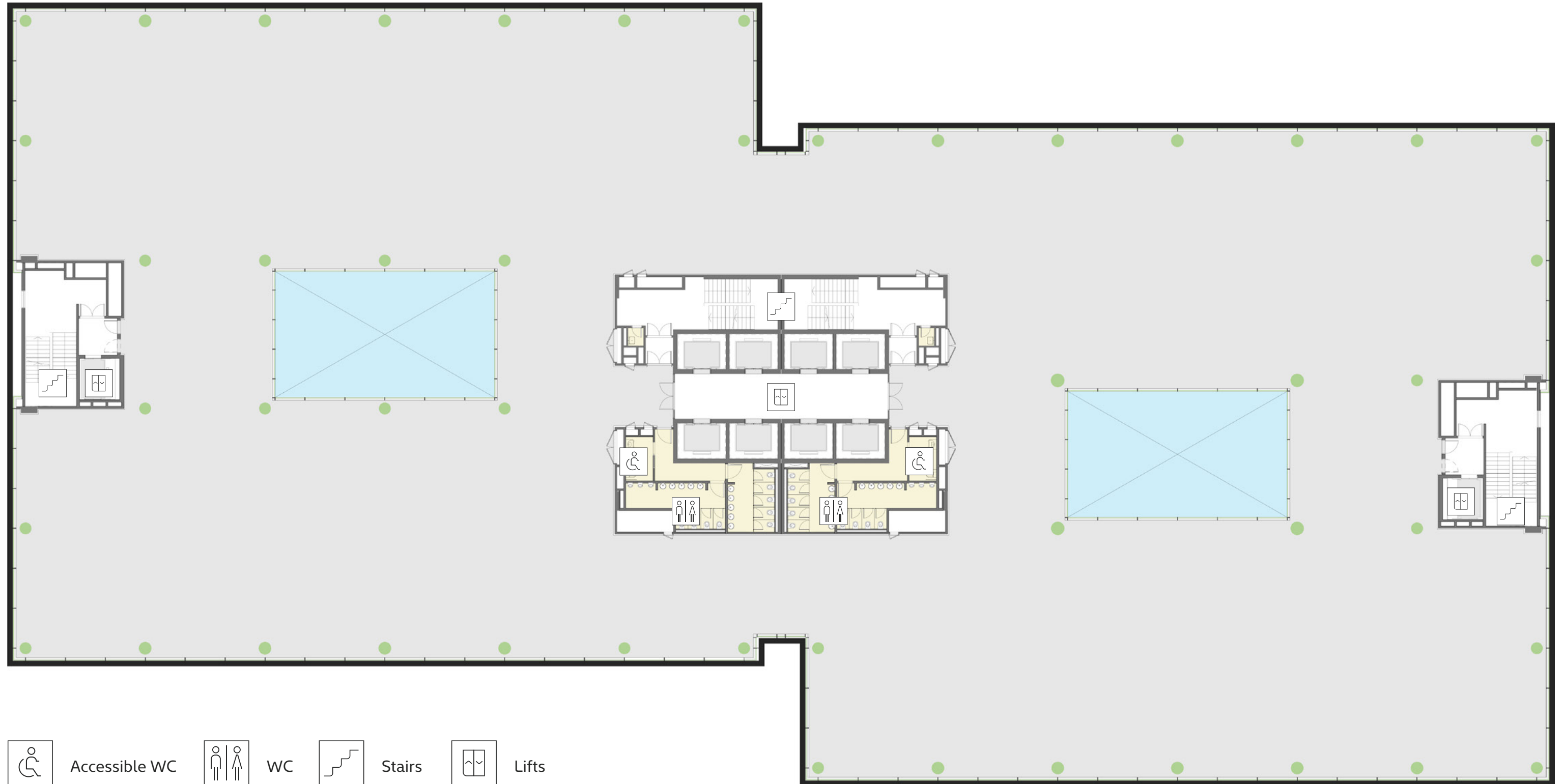
FLOOR PLANS



-  Accessible WC
-  WC
-  Stairs
-  Lifts

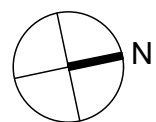
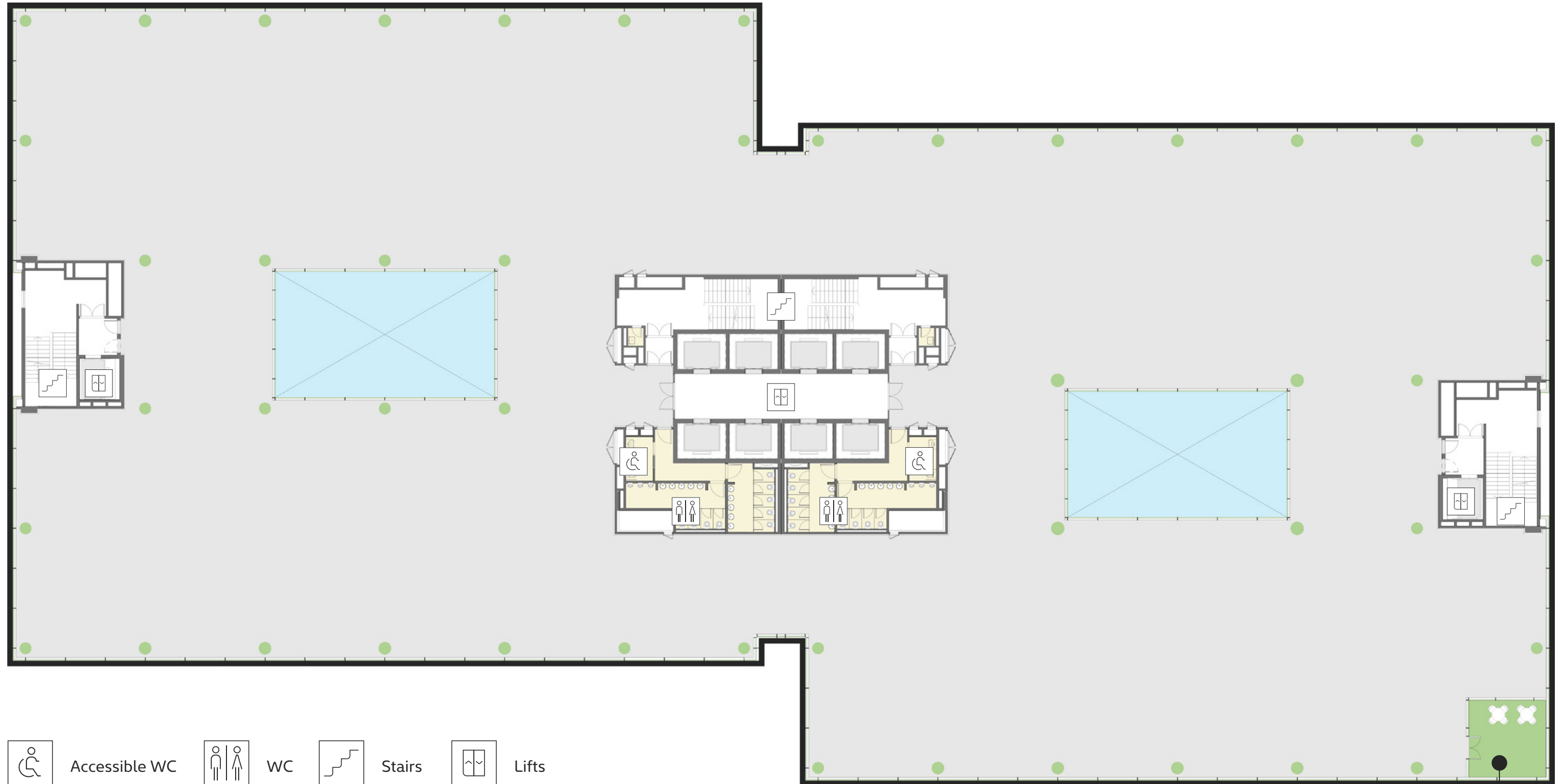
4th Floor

4,634 sqm



5th Floor

4,598 sqm



-  Accessible WC
-  WC
-  Stairs
-  Lifts

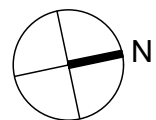
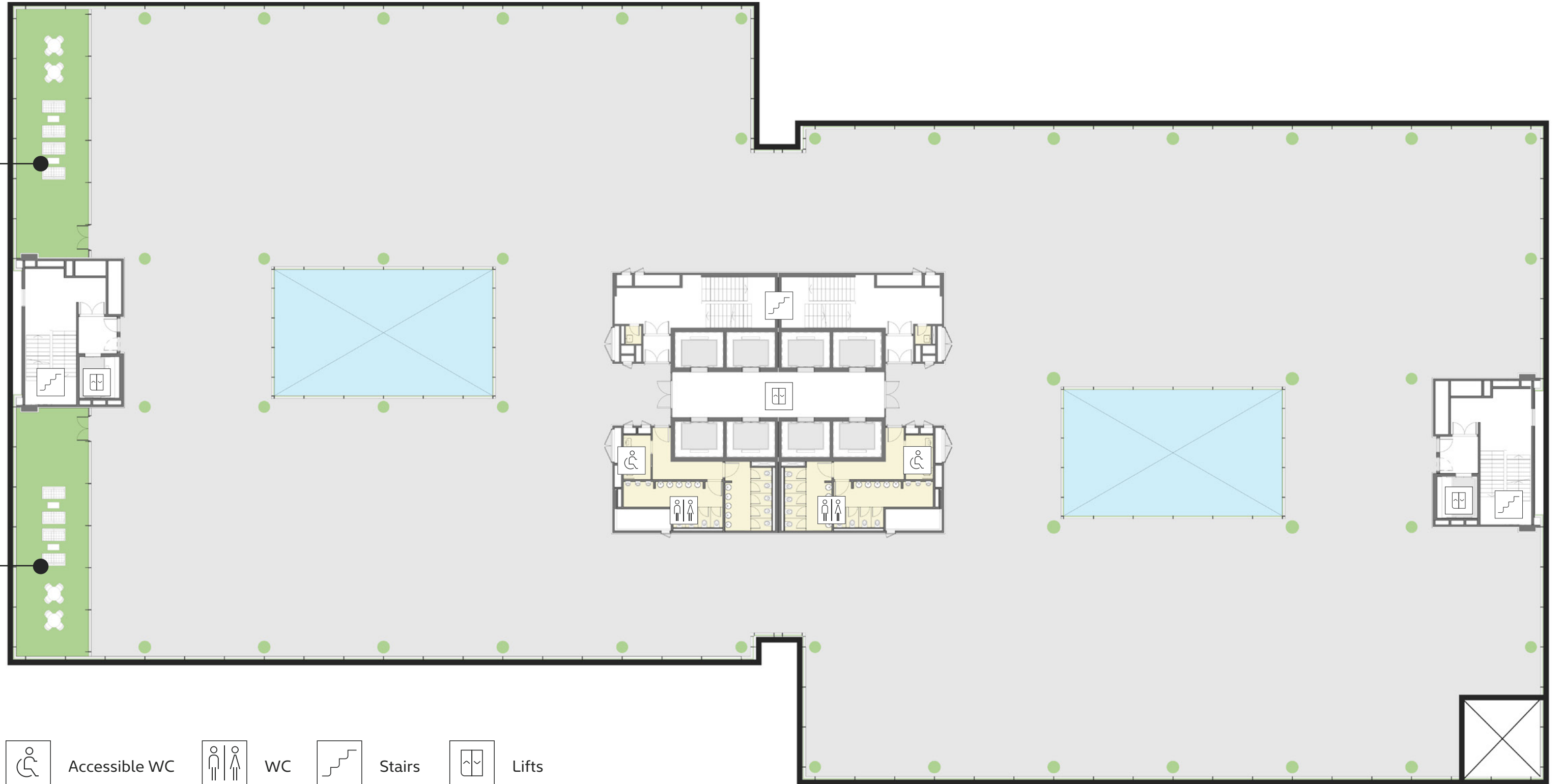
Terrace: 28 sqm

FLOOR PLANS

6th Floor

4,387 sqm

Terrace: 174 sqm



Accessible WC



WC

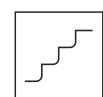
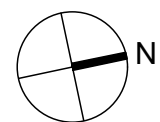
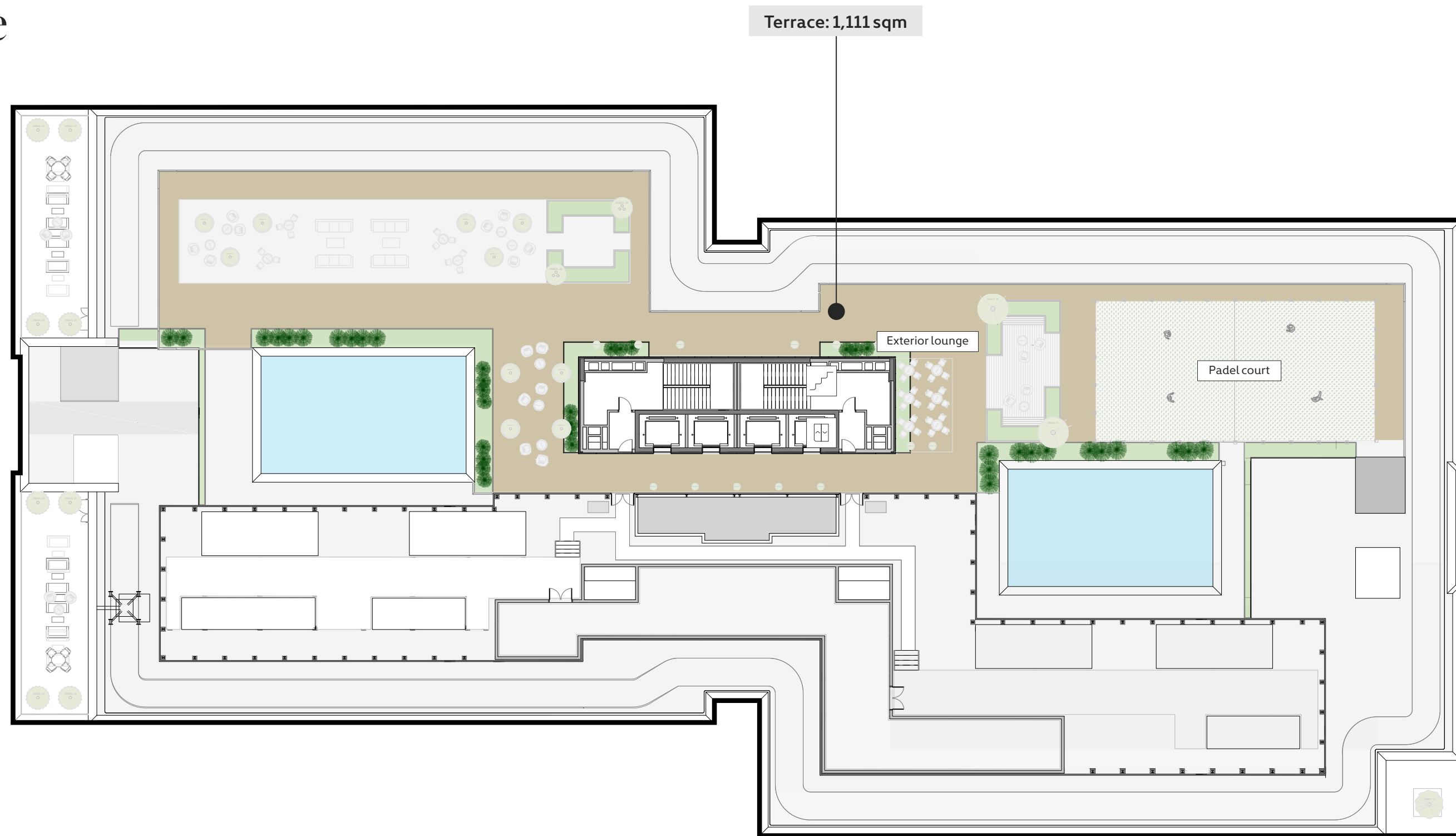


Stairs

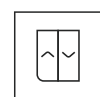


Lifts

Roof terrace



Stairs



Lifts

skylightmadrid.com